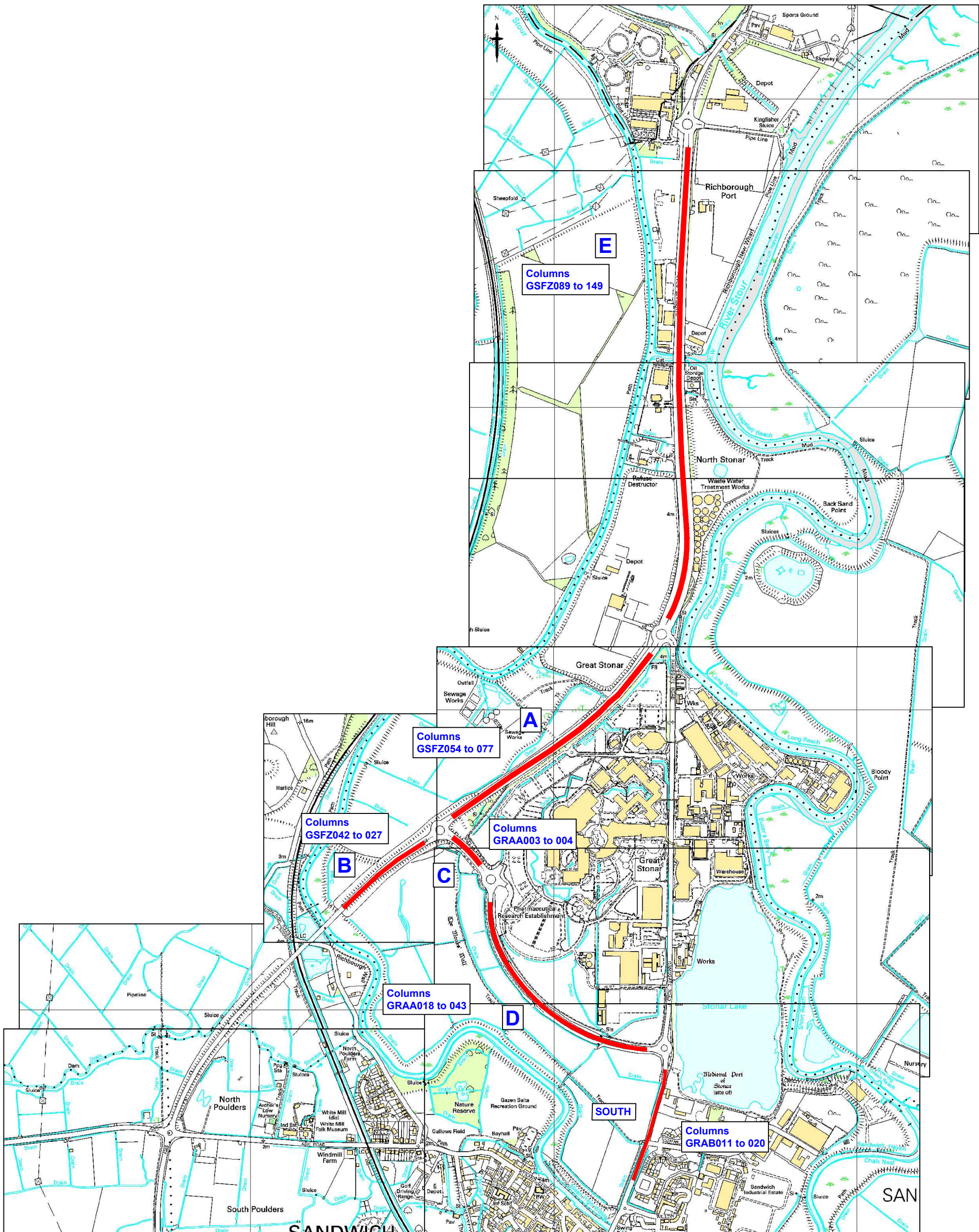
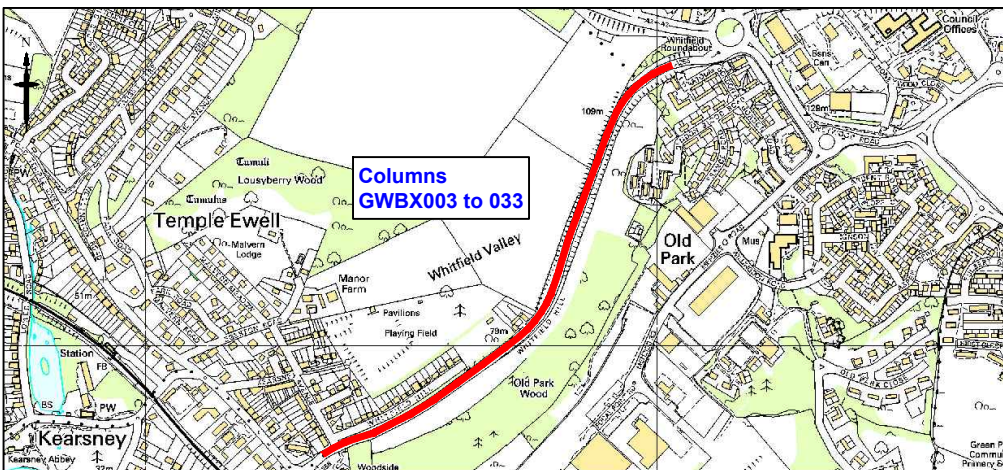


KEY

- Extent of Columns to be switched off.
- GUES001 Column Ref No. of columns to be switched off.

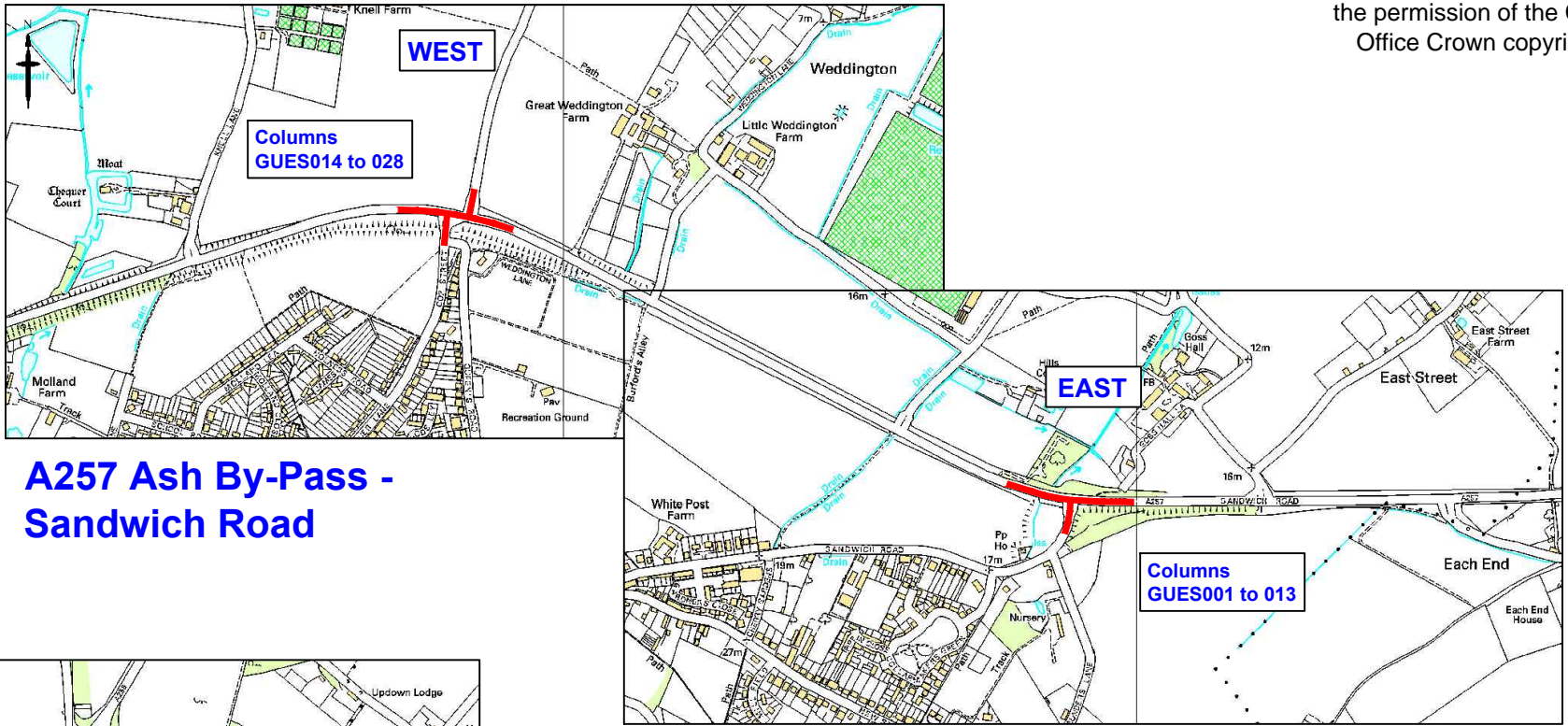


A256 EAST KENT ACCESS PHASE 1 - Locations A, B, C, D, E
Ramsgate Road (South)

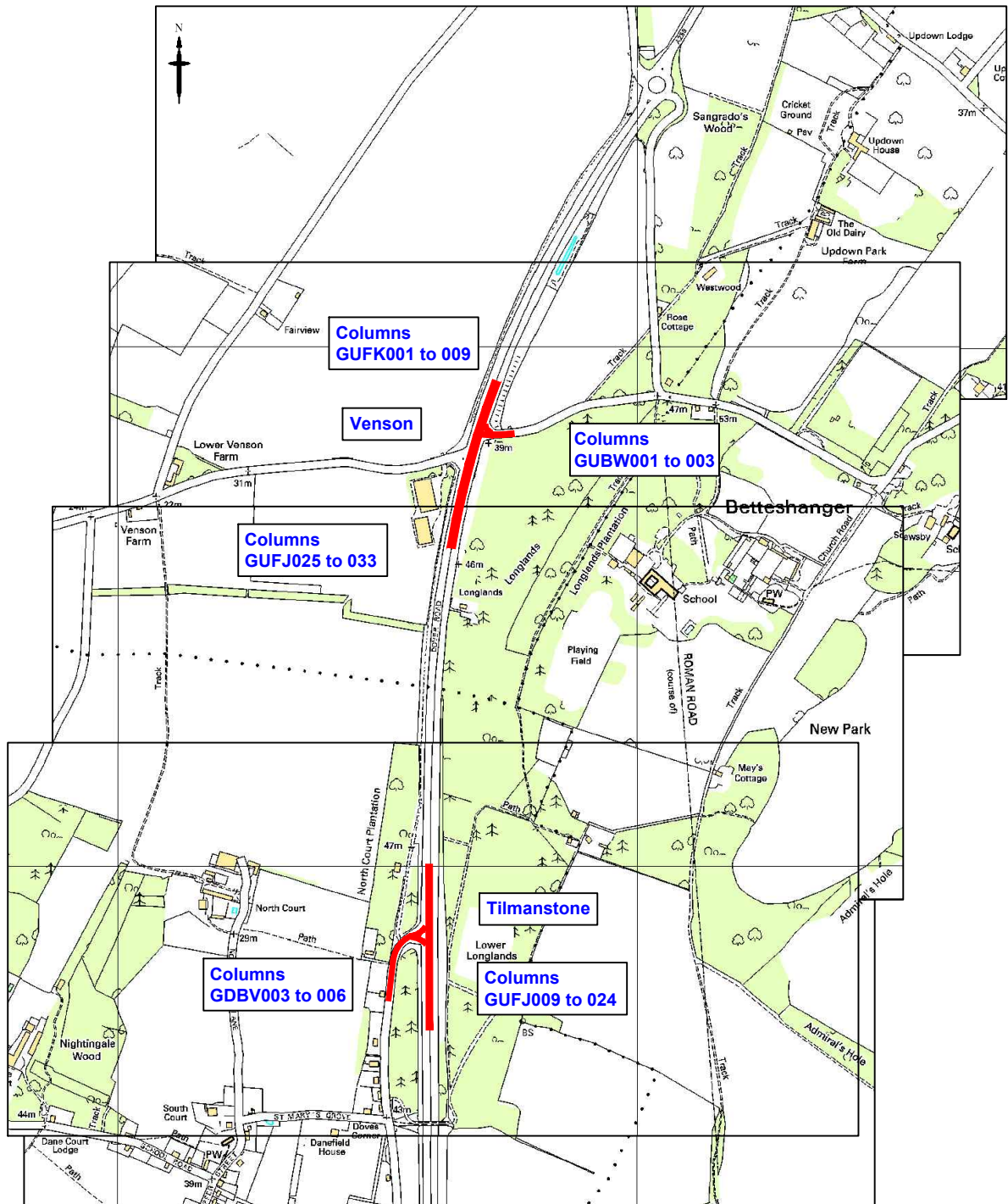


Whitfield Hill

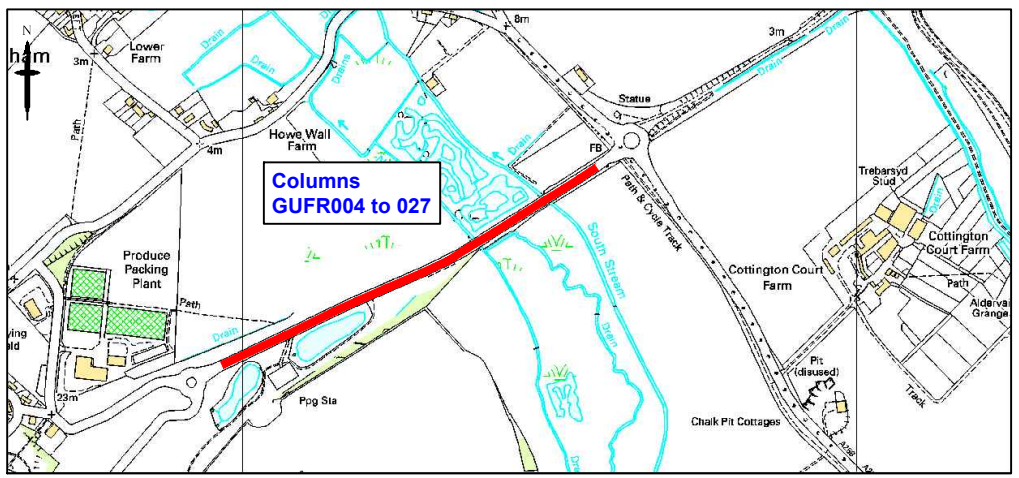
DOVER



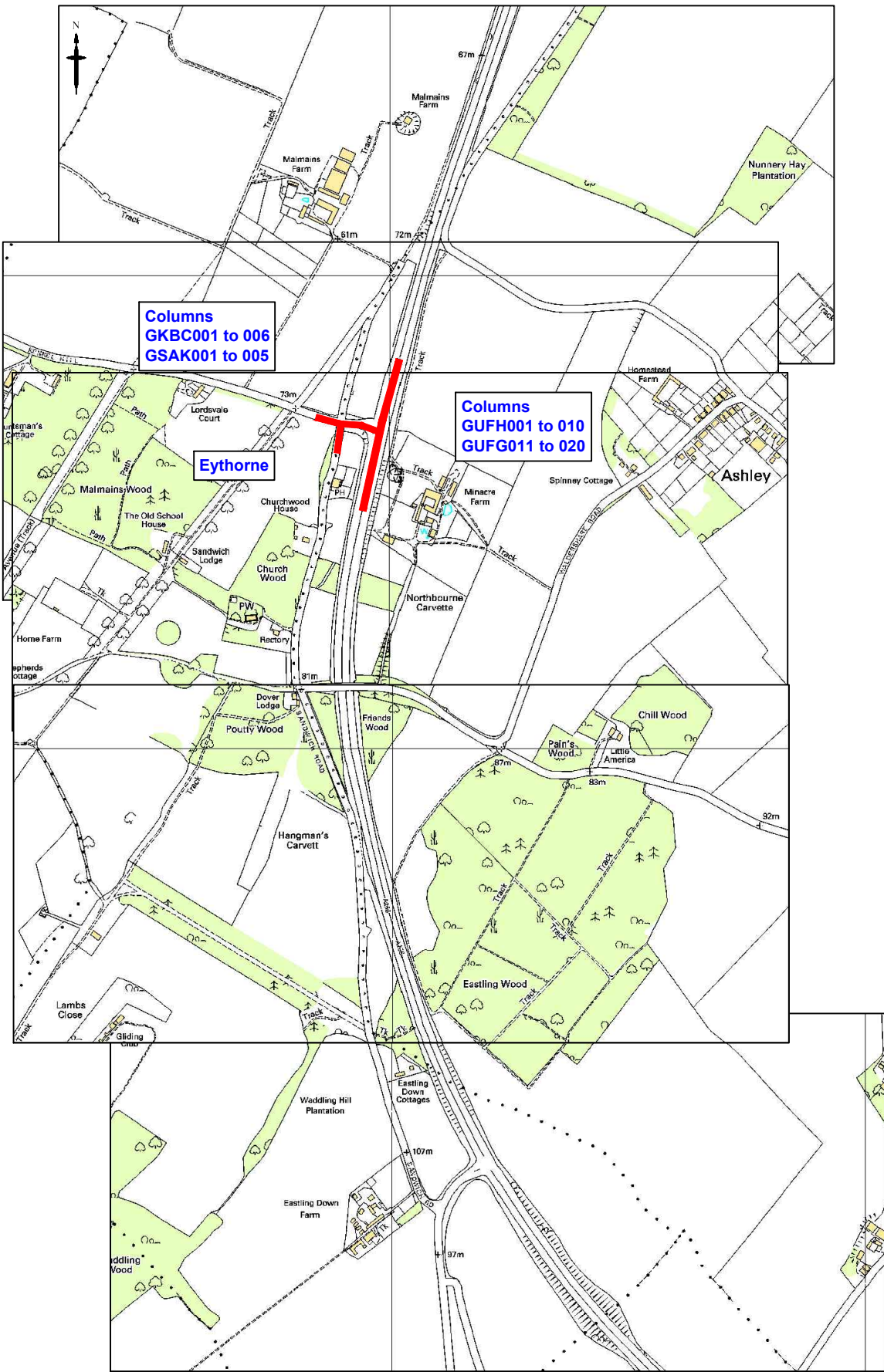
A257 Ash By-Pass -
Sandwich Road



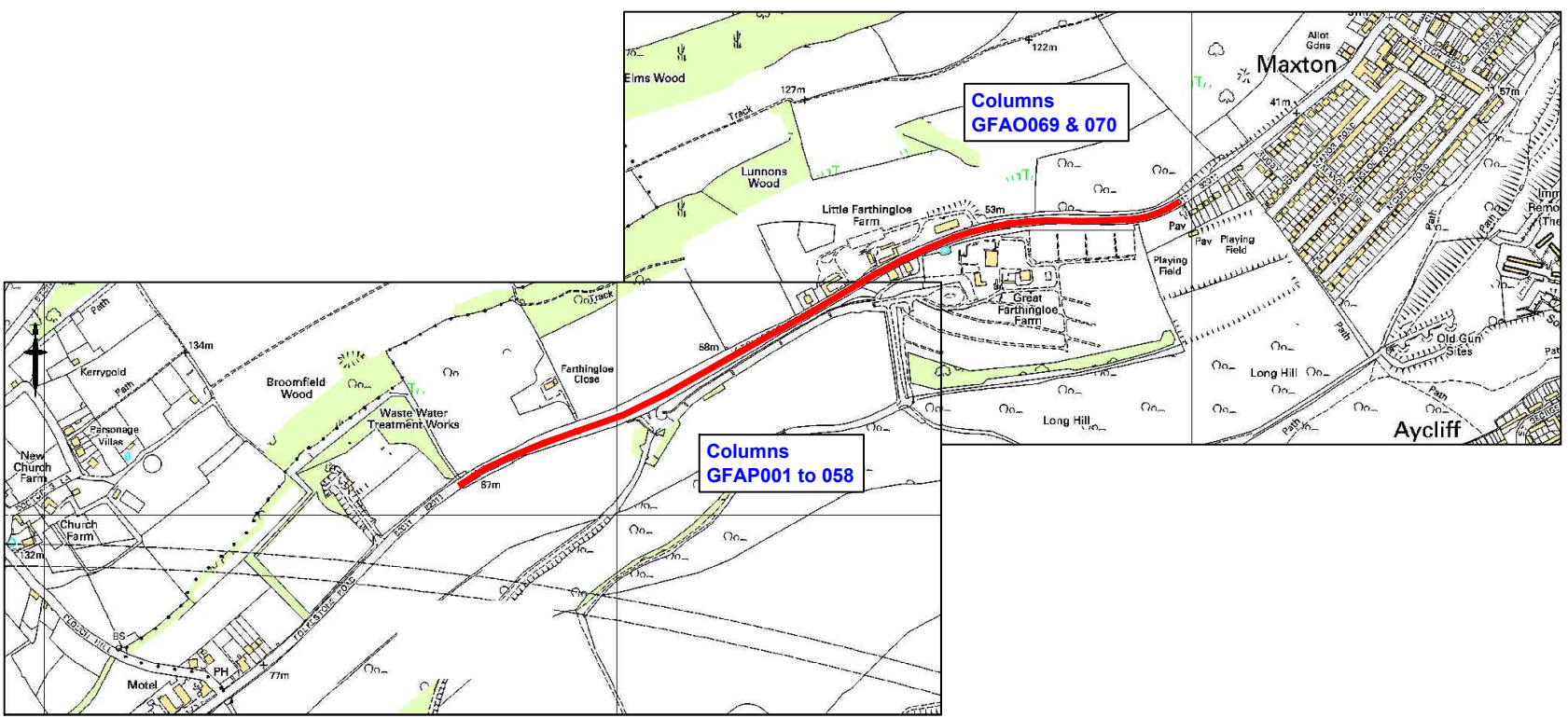
A256 By-Pass Right Turn Lane - Venson and Tilmanstone



Betteshanger Business Park



A256 By-Pass - Right Turn Lane - Eythorne



Folkestone Road, Farthingloe

2	28/01/2013	Plan Revised for JTB	HC	CH	CH
1	22/01/2013	Notes changed to indicate switch off	HC	CH	CH
0	02/01/2013	-	HC	CH	CH
Rev	Revision Date	Purpose of revision	Drawn	Checked	Approved



Kent County Council
Ashford Highway Depot, Javelin Way,
Ashford, Kent, TN24 8AD
Tel: 08458 247 800

Project Safe and Sensible Street Lighting
Phase 1
Trial Switch Off of Surplus Lights

Location Plan - Dover District

Drawing status For Consultation

Scale Not to Scale Do not scale

Drawing number KCC/HL/ESP/Dover/01 Rev 2

This drawing is not to be used in whole or part other than for the intended purpose and project as defined on this drawing. Refer to the contract for full terms and conditions.